



# MOVING THE DIAL ON:

An e-learning event hosted by



Community-Based Research Canada  
Recherche partenariale du Canada

# Equity-Informed Approaches to the Climate Emergency

With Dr. Sarah Marie Wiebe & Kirsten Mah



**APRIL 27, 2023 12PM-2PM ET**



Community-Based Research Canada  
Recherche partenariale du Canada

[www.communityresearchcanada.ca](http://www.communityresearchcanada.ca)



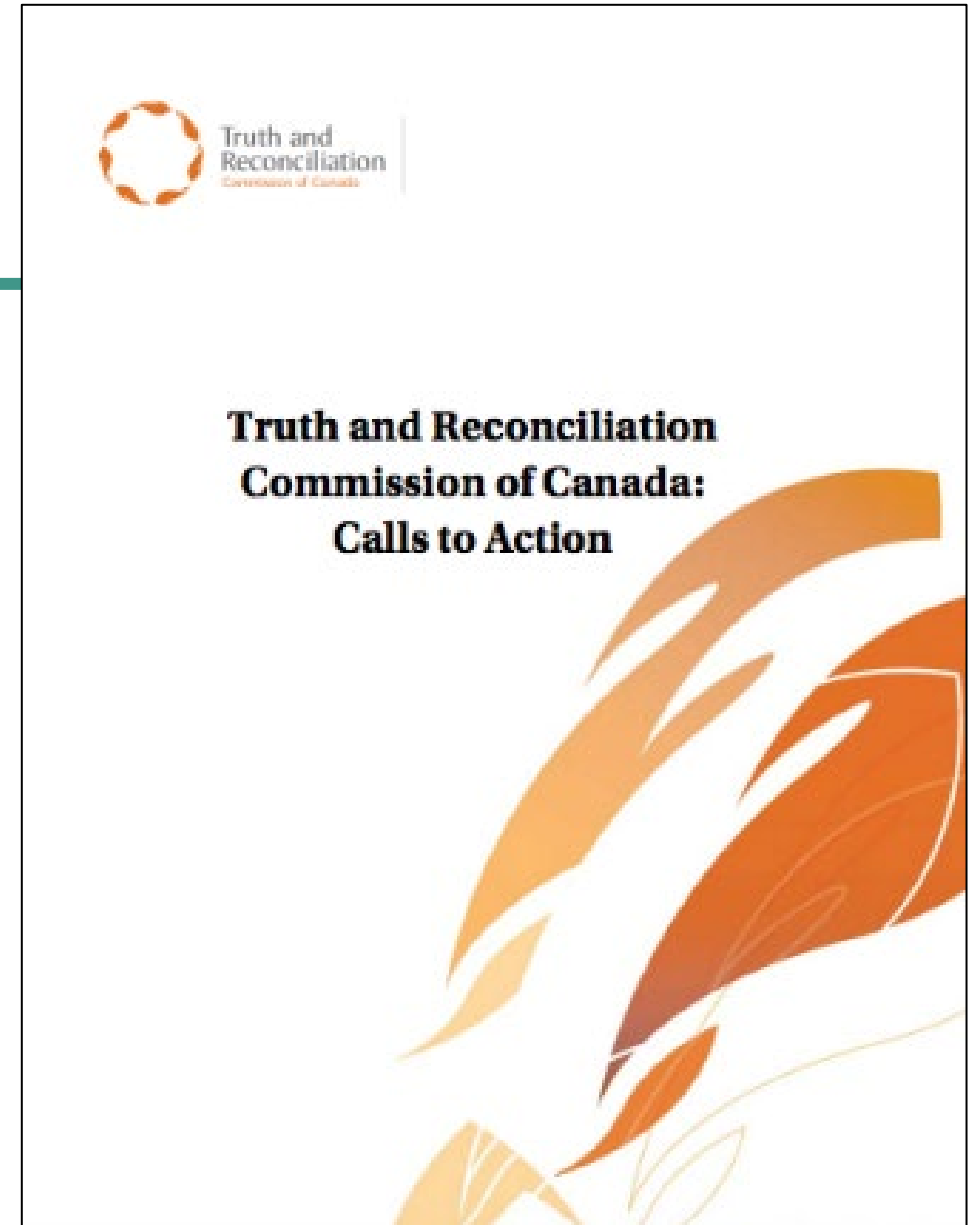
@CbrcResearch



Community Based Research Canada

# Call to Action #22

We call upon those who can effect change within the Canadian health-care system to recognize the value of Aboriginal healing practices and use them in the treatment of Aboriginal patients in collaboration with Aboriginal healers and Elders where requested by Aboriginal patients.



# Agenda

---



## Opening



## Webinar

Presentation

Q&A period



## Live Discussion

Breakout rooms

Large group  
debrief



## Closing

# Presenters

---



**Dr. Sarah Marie Wiebe**

Assistant Professor, School of Public Administration,  
University of Victoria



**Kirsten Mah**

Healthy Communities Planner, Health and Capital Planning  
Strategies, Capital Regional District (BC)

Moving the Dial on:

# Equity-Informed Approaches to the Climate Emergency

**Date: April 27th, 2023**

Community-Based Research Canada Presentation

Presented by

Dr. Sarah Marie Wiebe (University of Victoria)

Kirsten Mah (Capital Regional District)



Making a difference...together

# Territorial Acknowledgement



# The Research Team



Making a difference...together



SARAH MARIE  
WIEBE

Principal Investigator

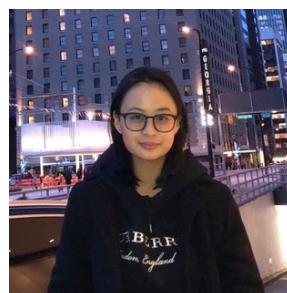
University of Victoria



KIRSTEN  
MAH

Co-Investigator

Capital Regional District



ALFONSINE  
LEYNES

Undergraduate  
Research Assistant

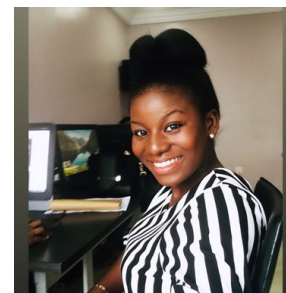
University of Victoria



RILEY  
SONDERGAARD

Undergraduate  
Research Assistant

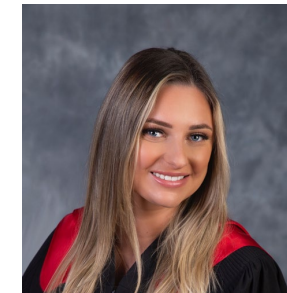
University of Victoria



JUMAI EMENIKE

Graduate Research  
Assistant

University of Victoria



LEXY STEWART

Graduate Research  
Assistant

University of Victoria



Erica  
Dolman

Graduate Research  
Assistant

University of Victoria



# Preview of Discussion Questions

**Question 1:** How can the results of equity-informed community-engaged research impact policy outcomes?

**Question 2:** How do include community voices in our research without overwhelming already overstretched organizations?

# Project Scope

## Geographic Scope

---

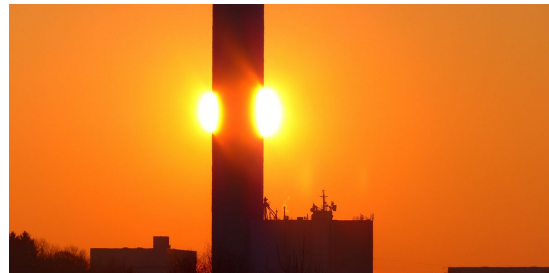
The area of study the project focuses on is the Capital Regional District (CRD). This region is home to 20 First Nations, 13 municipalities and 3 electoral areas.



## Our Purpose and Objectives

---

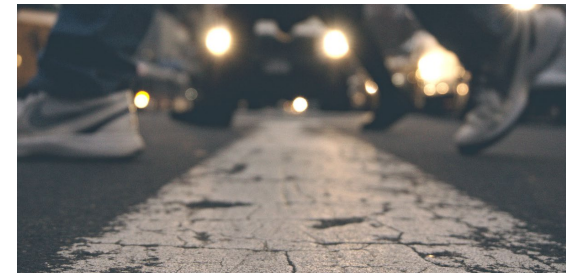
Our purpose is to analyse service response to extreme heat events in the CRD in regards to vulnerable populations. We are doing this through a mixed methods research approach, to hear from those who are more vulnerable to extreme heat exposure.



## Priority Populations

---

We are looking for responses from those who are most vulnerable to extreme heat exposure. We hope that from this, we can provide an overview of how vulnerable populations can be better serviced at times of extreme heat.



# Research Questions



## Question # 1

How are local, regional, provincial, Indigenous and federal governments preparing for extreme weather events in Canada?

---

## Question # 2

Who are the most vulnerable or priority populations to negative health impacts related to extreme heat events?

---

## Question # 3

What does the experience of extreme heat look like for these groups?

---

## Question # 4

What recommendations do they have for improving emergency planning, policy and practice before, during and after extreme heat events?

# Planetary Health

“Academic health institutions declare the health of the planet a **Code Red** emergency and call for immediate implementation of planetary health education and research, and the transition to climate-resilient and low-carbon health systems in order to build a healthy, sustainable, and just future for all.”

Association of Faculty of Medicines of Canada (**emphasis added**)  
*Academic Health Institutions' Declaration on Planetary Health*

“Planetary health is a solutions-oriented, transdisciplinary field and social movement focused on analyzing and addressing the impacts of human disruptions to Earth’s natural systems on human health and all life on Earth.”

Planetary Health Alliance



# Equity, Vulnerability and Justice



## **A Systemic Approach**

Climate adaptation and resilience developments tended to overlook historic and ongoing patterns of uneven and inequitable development, leading to worsening social and environmental vulnerabilities for marginalized groups.



# Priority Populations

- Chronic mental or physical health condition
- Living alone
- Living with disability
- Nursing parent
- Older adult (65 years old and above)
- Unhoused or worried about losing housing
- Pregnant person
- Recent immigrant
- Refugee
- Substance use (i.e. alcohol, opioids, tobacco)
- Temporary migrant worker

# Equity and Inclusion Considerations



Practices and benefits of equity-informed research helps increase awareness and address systemic barriers, contributing to a more diverse and inclusive research ecosystem.

Partnerships that identify and address power dynamics demonstrate that community voices matter, compensate community members for their time and expertise, and prioritize community needs and goals instill equity in the research process.

# Research Questions



## Question # 1

How are local, regional, provincial, Indigenous and federal governments preparing for extreme weather events in Canada?

---

## Question # 2

Who are the most vulnerable or priority populations to negative health impacts related to extreme heat events?

---

## Question # 3

What does the experience of extreme heat look like for these groups?

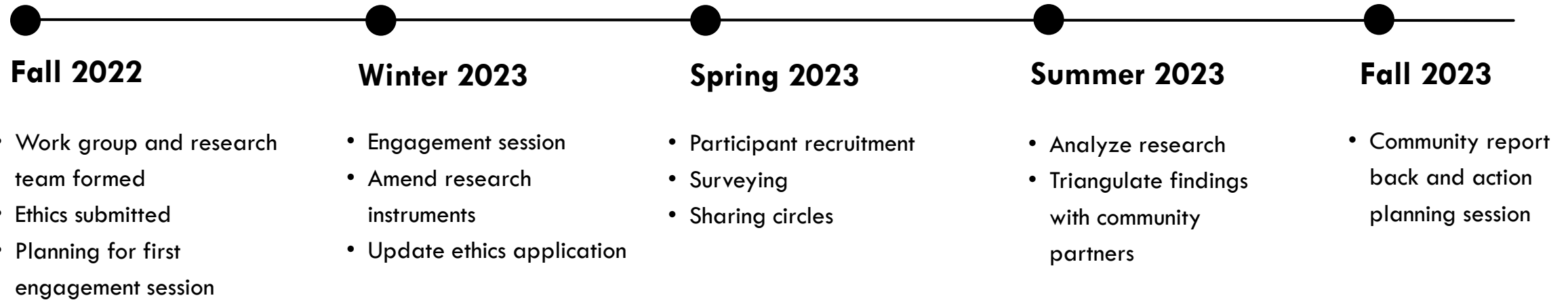
---

## Question # 4

What recommendations do they have for improving emergency planning, policy and practice before, during and after extreme heat events?



# Timeline



# Recruitment

## A HOT TOPIC!

Lived Experiences of Extreme Heat Events



Have you noticed that our Summer is getting hotter? Have you experienced extreme heat events?

Let's talk about it! at a Research **Sharing Circle!**  
Your experiences and thoughts on the impact of extreme heat will support equitable heat adaptation strategies in the Capital Regional District.  
Participants will receive a **\$50 honorarium**

**Dates: TBD**

**Duration: 1.5 hours per session**

To be a part of this discussion, email us at:  
**feelingtheheatresearch@gmail.com**

Please note that selection will be subject to the study sample criteria.

**A HOT TOPIC Survey**

We invite you to participate in a survey about extreme heat.

We want to hear from people in the Capital Regional District (CRD) about their experiences with extreme heat. We want to understand what the health impacts are of these events for people who are particularly vulnerable to extreme heat.

**THE SURVEY WILL BE AVAILABLE FROM MARCH - JUNE 2023**

**WHO**

We want to hear from people who are particularly vulnerable to extreme heat based on:

- Demographics (e.g., pregnancy, older adults, people with disabilities)
- Work (e.g., outsider workers)
- Living situation (e.g., isolated, high apartment tower)

**WHY**

This project is being led by Dr. Sarah Wiebe from the University of Victoria in partnership with the CRD's Community Health Network. The aim is to amplify the stories of people who experienced negative health impacts of extreme heat and help service providers and governments understand the best ways to help before, during and after extreme heat events.

**CONTACT**

- Survey will take 15-20 minutes
- You will be entered to win a \$50 gift certificate
- For questions or to participate in an interview:  
**feelingtheheatresearch@gmail.com**

Scan the QR code to be directed to the survey or use the URL below

<https://redcap.link/ahotopiccrd>

## A HOT TOPIC!

Lived Experiences of Extreme Heat Events



Our Summer is getting hotter! Have you experienced extreme heat while you were **pregnant** or **nursing**? If so, we want to hear from you at a **Virtual Sharing Circle!** We would like to know what it feels like to be perinatal during extreme heat events.



Your experiences and thoughts on the impact of extreme heat will support equitable heat adaptation strategies in the Capital Regional District.

Participants will receive a **\$50 honorarium**

**Dates: 16 May 2023 @ 7pm PST /23 May 2023 @ 2pm PST**

**Duration: 1.5 hours per session**

RSVP for a session at:  
**feelingtheheatresearch@gmail.com**

Or register on Eventbrite at:  
<https://lived-experiences-of-extreme-heat.eventbrite.ca>

Please note that selection will be subject to the study sample criteria.

# Future Visions

- The outcomes of this research will be policy and planning that supports vulnerable groups to prepare for, respond to and recover from extreme weather events.
- The longer-term objective of this research is to expand beyond extreme heat to research vulnerable groups associated with a range of weather events.
- This research will be used to impact policy, program and planning to ensure that affected priority populations are supported to adapt and respond to such events.



# Connect with us

## Contact Information:

Kirsten Mah ([KMah@crd.bc.ca](mailto:KMah@crd.bc.ca))

Sarah Marie Wiebe ([swiebe@uvic.ca](mailto:swiebe@uvic.ca))  
[@smwiebe](https://www.sarahmariewiebe.com) | [www.sarahmariewiebe.com](http://www.sarahmariewiebe.com)

# Thank you to our funders



Social Sciences and Humanities  
Research Council of Canada

Conseil de recherches en  
sciences humaines du Canada

Canada 



Michael Smith  
**Health**  
**Research BC**

# Question and Answer

# Stay in Touch!



## e-Newsletters

The CBR Canada e-Newsletter is released every Fall, Winter and Spring, providing updates on the latest news, resources, and opportunities in Canadian-led community-based research.

## Subscribe to the e-News

Don't miss community-based research news and events.

\* indicates required

Email Address \*

Powered by [MailChimp](#)



# Thank You!

[www.communitybasedresearch.ca](http://www.communitybasedresearch.ca)



Community-Based Research Canada  
Recherche partenariale du Canada



# Live Discussion



# Breakout Discussion Information

---

1. Nominate a note-taker for each breakout group
2. Introduce yourselves within your group (your name, pronouns, role, location)
3. Discussion questions are on the google doc (link in chat) – the note-taker will record notes from your group on this shared document
4. We'll debrief as a large group following the breakout groups
5. After the event, an infographic summarizing key points of the discussion will be created and shared

# Discussion Questions


---


**1:** How can the results of equity-informed community-engaged research impact policy outcomes?

**2:** How can we include community voices in our research without overwhelming already overstretched organizations?

# Large Group Debrief

# Webinar Recordings & Live Discussion Summaries



 **Community-Based Research Canada**  
Recherche partenariale du Canada

[Become a Member](#)

[Home](#) | [Who We Are](#) | [Network](#) | [News and Events](#) | [Get Involved](#) | [Resources](#)

**Webinars & Discussions**

- Approach
- Webinars & Discussions**
- Publications
- Case Studies

CBR Canada hosts webinars and live online discussions to bridge capacities and promote research excellence. Below are webinar recordings and event summaries, organized from the most recent to earlier. Upcoming webinars and discussions are posted on the [Events page](#).

[2022](#) | [2021](#) | [2020](#) | [2019](#) | [2018](#) | [Earlier](#)

# Feedback

---

Moving The Dial: A CBRCanada E-Learning Series





# Thank You!

[www.communitybasedresearch.ca](http://www.communitybasedresearch.ca)



Community-Based Research Canada  
Recherche partenariale du Canada