




MOVING THE DIAL ON:

An e-learning event hosted by  Community-Based Research Canada
Recherche partenariale du Canada

Co-Creating Just Sustainabilities



Lake Superior Living Labs Network

Presented by Charles Levkoe &

Lindsay Galway

OCTOBER 12, 2023 12PM-1PM ET



Community-Based Research Canada
Recherche partenariale du Canada

www.communityresearchcanada.ca



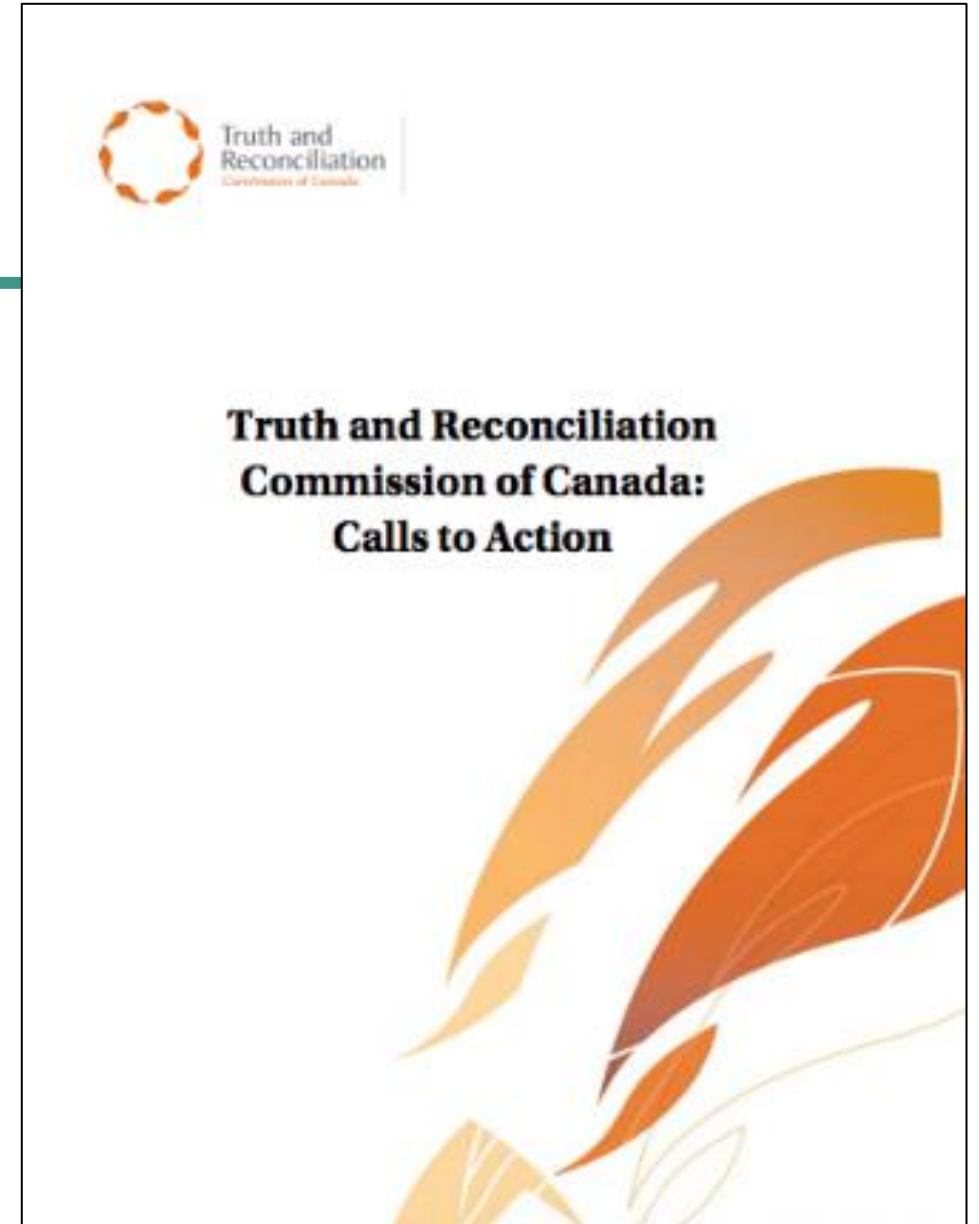
@CbrcResearch



Community Based Research Canada

Call to Action #92

“We call upon the corporate sector in Canada to adopt the United Nations Declaration on the Rights of Indigenous Peoples as a reconciliation framework and to apply its principles, norms, and standards to corporate policy and core operational activities involving Indigenous peoples and their lands and resources”



Agenda



Opening



Presentation



Q&A



Closing

Presenters



Dr. Charles Levkoe

Canada Research Chair in Equitable
and Sustainable Food Systems
Lakehead University



Dr. Lindsay Galway

Canada Research Chair in
Social-Ecological Health
Lakehead University



LSLLN

Lake Superior Living Labs Network



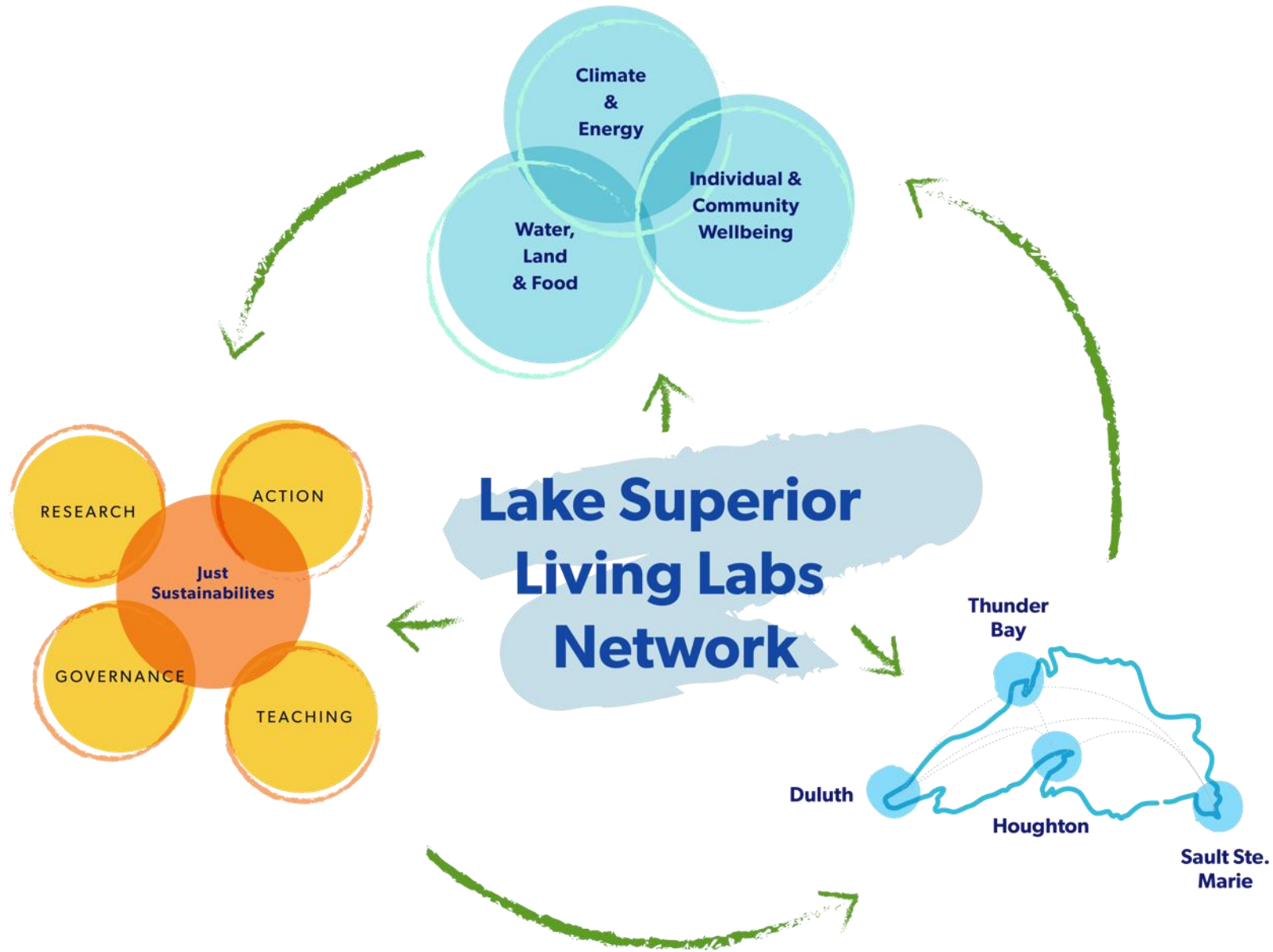
Great Lakes Research
Centre



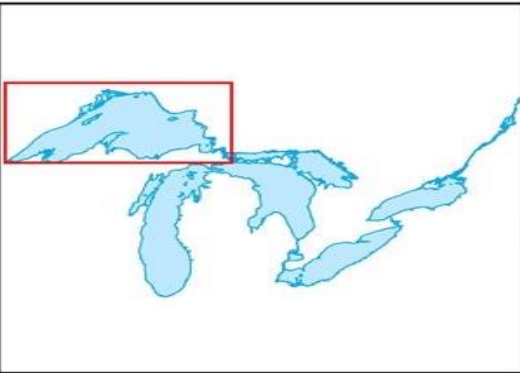
Social Sciences and Humanities
Research Council of Canada

Conseil de recherches en
sciences humaines du Canada





Lake Superior Watershed



- Legend**
- Cities/Towns
 - State Borders
 - Rivers
 - - - International Border
 - Lake Superior Watershed
 - Diversions



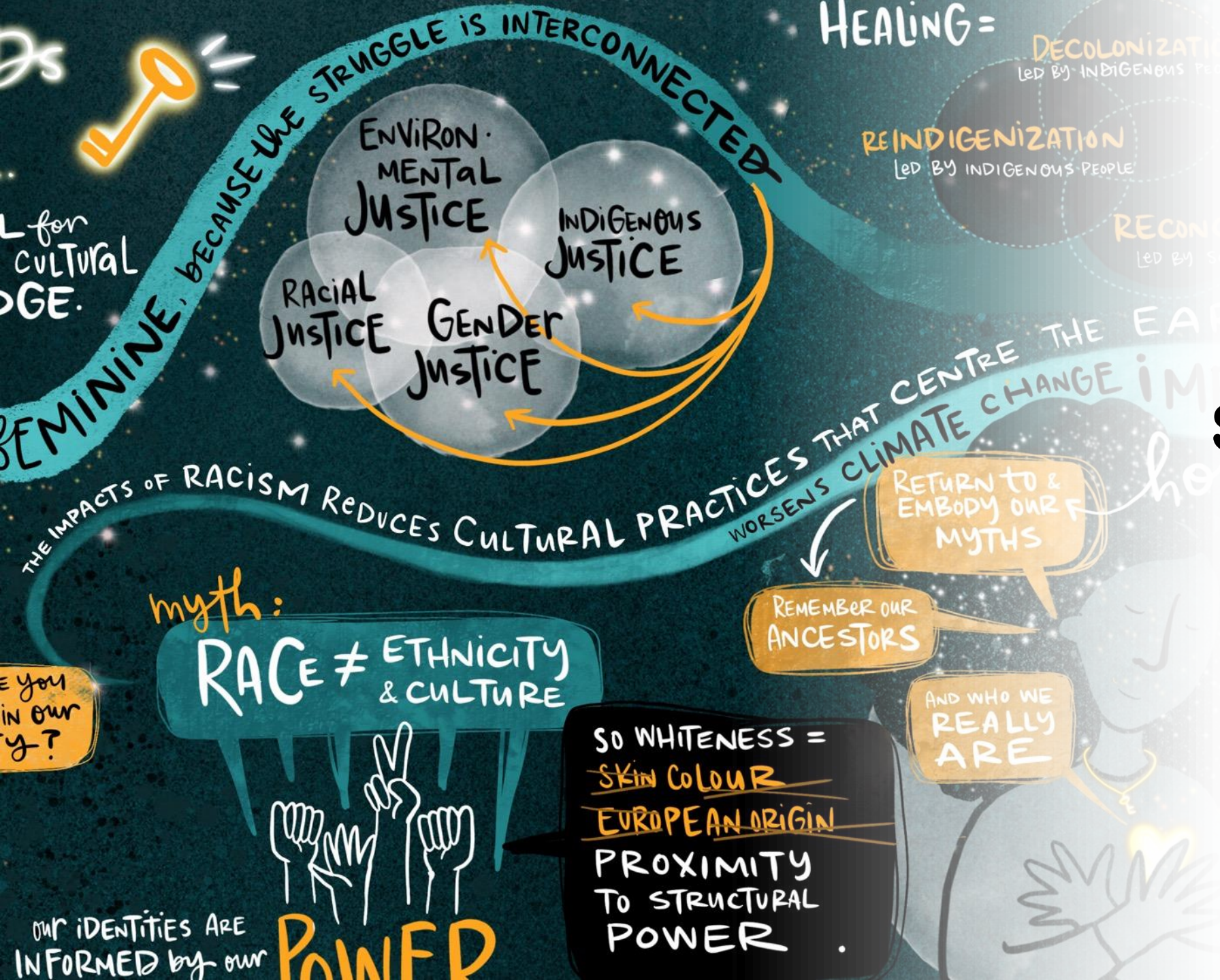
The background features a collage of hand-drawn icons: interlocking gears in grey, blue, and red; a laptop displaying a bridge diagram; a lightbulb; an open book; a test tube; a flask; a computer monitor; and a notepad with a pen. Green wavy lines flow through the scene.

LIVING LAB

Where Knowledge Grows

Key characteristics

- Co-creation of innovative solutions
- Placed-based experiential learning and action
- Integration of teaching, research and action
- Iterative processes (living)
- Experimentation & learning-by-doing (Labs)



Engaging Just Sustainabilities

Co-creating Nested Partnerships Across Watersheds



Cross-hub projects

Mini Meet-Ups & Webinars

Fate and Effects of Plastics in the Great Lakes

Kennedy Bucci Tues, Apr 4
University of Toronto 10am CST
& EcoSuperior 11am EST

Register:
<https://tinyurl.com/LSplasticpollution>
www.livinglabsnetwork.org

LSSLN
www.livinglabsnetwork.org

**The Thin Outdoors:
Creating a culture of fat inclusion
in outdoor recreation**

Leigh Potvin Tues, Feb 21
Lakehead University 12pm CST / 1pm EST

Register:
<https://tinyurl.com/FatInclusionOutdoors>

LSSLN Mini Meet-Up
Lake Superior Living Labs Network

**Lake Superior Ecology &
Sustainable Fisheries Management**

Mike Rennie Fri, Dec 10
Lakehead University 12-1 CST / 1-2 EST

Lakehead University Email for zoom link:
superiorlivinglabs@gmail.com

www.livinglabsnetwork.org

**Climate Action & Justice
through design**

Tues, May 24
11 CDT / 12 EDT

Rachel Wagner
through design LLC

Email for zoom link:
superiorlivinglabs@gmail.com
www.livinglabsnetwork.org

LSSLN MINI MEET UP
The Sun's Common Wealth for
Community Empowerment:
The Solar Commons - Bois Forte
Food Sovereignty Collaboration

Oct 26
3-4 CST (4-5 EST)

Email for zoom link:
superiorlivinglabs@gmail.com

Dani Perates
Renika Love
Kathryn Milon

LSSLN
www.livinglabsnetwork.org

LSSLN Mini Meet-Up
DIGITAL STORYTELLING

Sustainability Stories
Gavin Shields & Lindsay Galway, Lakehead University

Building Resilience through Food Literacy
Laura Wyper, Algoma University

Monday, June 7
2-3 CST (3-4 EST)

LSSLN
superiorlivinglabs@gmail.com
www.livinglabsnetwork.org

Action Research



“Water is Life”: Creative Action to Heal Bodies of Water
Solidarity Collective Mural,



Towards Foodsheds: Reimagining
Food Systems in the Lake Superior
Watershed



Collaborative Film Project
with Batchewana First Nation

Thunder Bay Hub - Relationships and (re)-storying

What do you need from this emerging collaborative to sustain your journey?

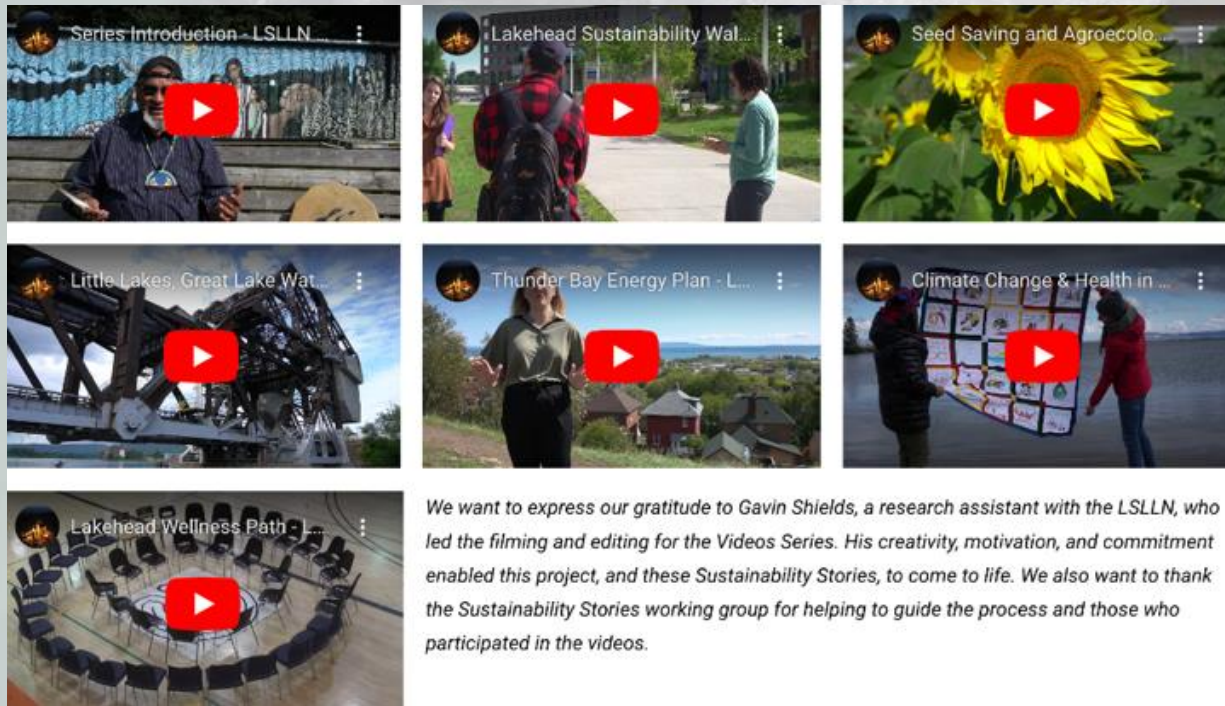
- 1) Sharing ideas, perspectives, and stories
- 2) Supporting relationships
 - With each other and place
- 3) Moving beyond dominant ways of thinking, knowing and doing
- 4) Collectively creating change
- 5) Emergence, diversity, restoration, and care

What can you imagine creating together?



Thunder Bay Hub - Sustainability Stories Video Series

- Using video as a medium to examine, share, and synthesize sustainability stories from this place



Throughout 2020, members of the Thunder Bay hub co-created the Sustainability Stories Video Series. Our goal was to use digital storytelling to highlight efforts, share learnings, and synthesize a place-responsive understanding of what Sustainability means here in the community of Thunder Bay and across the watershed – as related to projects that our members and partners are engaged in. The videos were crafted to tell stories, prompt reflection and invite community participation. The videos also weave together some of the key themes of the LSLLN: relationships, collaboration, diversity, place, and just sustainabilities.

Thunder Bay Hub - Climate Action Field School (2021)

DAY 1: Welcoming and grounding

DAY 2: Transitioning

DAY 3: Rising Up

DAY 4: Connecting

DAY 5: Regenerating

DAY 6: Co-creating & sustaining

DAY 7: Looking forward



Thunder Bay Hub - Climate Action Field School (2023)

Transformative
Education



C²U EXPO 2023

COMMUNITY-COLLEGE-UNIVERSITY EXPOSITION

Lakehead University, Thunder Bay, Ontario

June 5-8, 2023

Thunder Bay Hub - Lakehead Climate Action Park



- The design should reflect the dynamic and adaptive nature of ecosystems and climate action and the flow of the river
- Have an interactive park that is connected to other activities and facilities at LU (greenhouse, research, curriculum)

Restore relationships to the land
Incorporate indigenous and medicinal plants and edible plants
Restoring ecosystem processes and habitats for other living things

- Create a welcoming, aesthetic, accessible and safe space
- Consider access, lighting and emergency communications
- Make it inviting for all students and the community at large



**ENVISIONING
THE LAKEHEAD
UNIVERSITY
CLIMATE
ACTION PARK**

- The park should Integrate information on how to take political action
- Use the park to educate and raise awareness among citizens but also decision makers in the community
- It is a space for climate action events

- A place to connect with friends and the community for gathering
- Make connections with trail systems and other elements of the landscape
- A place to feel connected with the land and the river

- The park should inspire us to ask questions and educate us about what climate action we can take
- It can help hold the university and community accountable for taking climate action
- It should be interactive and have tangible examples of what climate action looks like (workshops, composting, gardening, planting events and other)

What is the LU Climate Action Park?

This visual illustrates a set of themes that emerged from our community discussions with students, faculty, staff and Indigenous elders about the climate action park. Our community envisions a space and a place that is not only about improving stormwater management and restoring habitat.

Our community envisions a CAP that is also about inviting, inspiring, and demonstrating diverse forms of climate action. Importantly, our community envisions a space that is designed to foster relationships and connections and a park that is welcoming, healing, and dynamic.

Thunder Bay Hub - Lakehead Climate Action Park

Welcome to the Lakehead Climate Action Park

What is a climate action park?

The area surrounding you is being transformed, piece by piece, into a climate action park. Climate parks are a new approach to responding to climate change, and what they look like is shaped by the community and place they are situated in. Generally, a climate action park involves co-designing greenspace to support ecosystem restoration, raise awareness, and inspire local action. A closer look at the recent history of this particular place reveals why it is a good space for a climate action park.

What do you see and hear?

As you stand here, your feet planted on the land, take a closer look at your surroundings. What stories are revealed in the natural and human-built landscape? What stories have been silenced? What stories do we need to hear?

Lakehead's campus is on the traditional territory of Fort William First Nation and is home to an ecosystem of diverse plants and animals. If we look and listen carefully, we notice that the McIntyre River, which flows through campus, is not running its natural course. Prior to the 1970s, the river here formed a natural oxbow (see Figure 1). Around 1970, Lakehead University dammed the river in two locations to create an artificial "lake" -- Lake Tambyn (see Figure 2). Historical records suggest that this was done to mitigate possible flooding and damage to nearby buildings, to beautify the campus, and to create recreational opportunities such as skating in the winter. At the time of construction, it was contentious, and students protested the creation of the lake (see Figure 3).



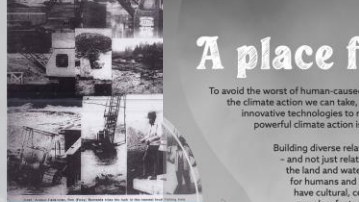
Figure 1: Aerial view of the McIntyre River oxbow. Figure 2: Aerial view of Lake Tambyn, an artificial lake created by damming the McIntyre River.

What can this place teach us about human-land relationships?

The addition of grass lawns and paved surfaces has created the conditions for stormwater to rapidly carry various surface pollutants and deposit them directly in the river. This has been a common construction practice across North America. Today, the damming of the river has caused it to bottleneck so the lake is now filling in with silt. This history invites us to consider what is our collective responsibility to this place? The practice of humans disrupting and controlling landscapes for their own needs is now commonplace. What if we worked together to enhance the natural gifts that are here in this place, in this river ecosystem, instead?

In some ways, the ecosystem is healing itself. The lake is becoming a rich new ecosystem, with wetland species making their home here—like cattails and water lilies. Robin Wall Kimmerer, scientist and Potawatomi scholar, writes about how human-built environments show incredible resilience. Life wants to continue. It is our current relationship with the land that is broken, and we have the power to change that.

The vision of Lakehead's Climate Action Park is to restore aquatic habitat along the river's shoreline, improve water quality by adding natural features to filter the stormwater entering the river and create a place for connection and learning.



Acknowledgements

COLE FOUNDATION
Great Lakes Local Action Fund
(Ministry of the Environment,
Conservation and Parks)

COLE GRADUATES
Lakehead University
Lake Superior Living Labs Network
Thunder Bay Remedial Action Plan

LAKEHEAD UNIVERSITY SPONSORS
A SUPPORT UNIT
Office of Sustainability
Department of Geography
and the Environment
Office of the President
Physical Plant
Office of Research and Innovation
Alumni Association
Faculty of Health and Behavioural Sciences
Faculty of Social Science and Humanities
Faculty of Business

We also acknowledge those who supported the recovery of this project: CIP student coordinators, Elise Gera-Niessing, Peggy Smith, and Bianca Trueman-Hines, Lakehead faculty, staff, and students.

This Climate Action Park is part of a broader climate park network in the Great Lakes region, supported by the Lakehead Climate Change Awareness Park.

A place for healing.

To avoid the worst of human-caused climate change, all of us are called upon to consider the climate action we can take, support, and amplify. While we certainly need innovative technologies to reduce global greenhouse gas emissions, the most powerful climate action is people-powered.

Building diverse relationships is a critical part of responding to climate change – and not just relationships with each other, but also our relationship with the land and water. Fire and flora have both biological and spiritual benefits for humans and for land. How might the plants and fire in this area, which have cultural, ceremonial, and culinary significance to many Indigenous peoples, foster relationships that can help advance reconciliation? How might the plants, which provide habitat and nourishment to animal life, help to make this a more inclusive and flourishing space for both humans and more-than-humans?

This Indigenous Teachings Planting Area includes ceremonial smudging plants such as wild sage and sweetgrass, and plants such as mint, yarrow, bee balm, anise hyssop, and strawberries are food for both humans and wildlife. These plantings also provide a habitat and food source for local wildlife including the painted lady butterfly, grey hairstreak butterfly, honeybee, bumblebee, hummingbird and other pollinators, and insect species.

The Role of Fire

Fire has an important role to play in climate change and climate action. We need to stop burning fossil fuels to slow climate change and prevent or limit the worst impacts in a warming world. Also, wildfires are becoming more frequent and severe in the areas around you as a consequence of climate change. And, as climate activist Naomi Klein references above, the growing climate justice movement is a raging fire, and we are its fuel. Fire can be a motivator and guiding light in our fight against climate change.

"In our teachings as an Anishinaabe people, where we are now is referred to as the time of the Seventh Fire. It is said that long ago prophets came to our people—the same prophets who instructed us specifically where to go—and they said that at the Time of the Seventh Fire, we as Anishinaabe people would have a choice between two paths. One path, they said, would be well worn, but it would be scorched; the other path, they said, would not be well worn, it would be green. It would be our choice upon which path to embark."

Winona LaDuke, Schumacher Lecturer, 2017



Fire and help it grow. The more sparks the fire has, the brighter it will burn. I invite you to add your spark. Are you ready to change everything?"

Naomi Klein, How to Change Everything, 2021

What is your role? What gifts do you carry?

We have the power to regenerate the world around us and rekindle reverence, compassion, and respect for all life. We invite you to get curious and explore the flora around you. Take a moment away from phones and technology to use your senses to engage with the landscape. While you do, reflect on this question: What is your role – what are the gifts that you carry and can contribute in support of climate action?

Climate Action: Fires & Flora

Acknowledgements



We gratefully acknowledge the support of WWF-Canada.

We give thanks for the guidance and contributions of Elder Gerry Martin, Elder-in-Residence at Lakehead University, to this project.



Thunder Bay Hub - Waterways radio show & podcast

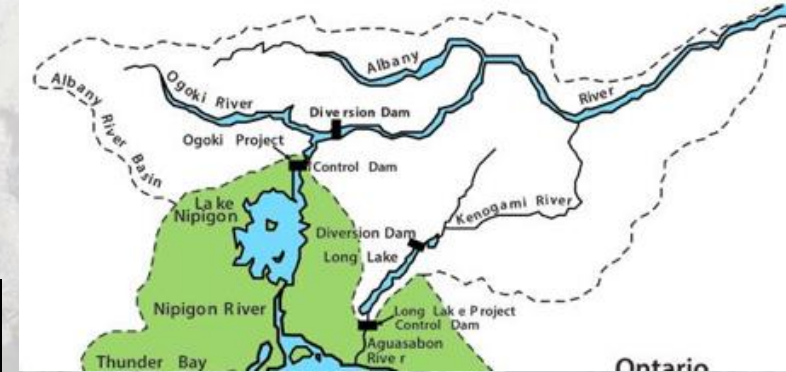
Kaministiquia



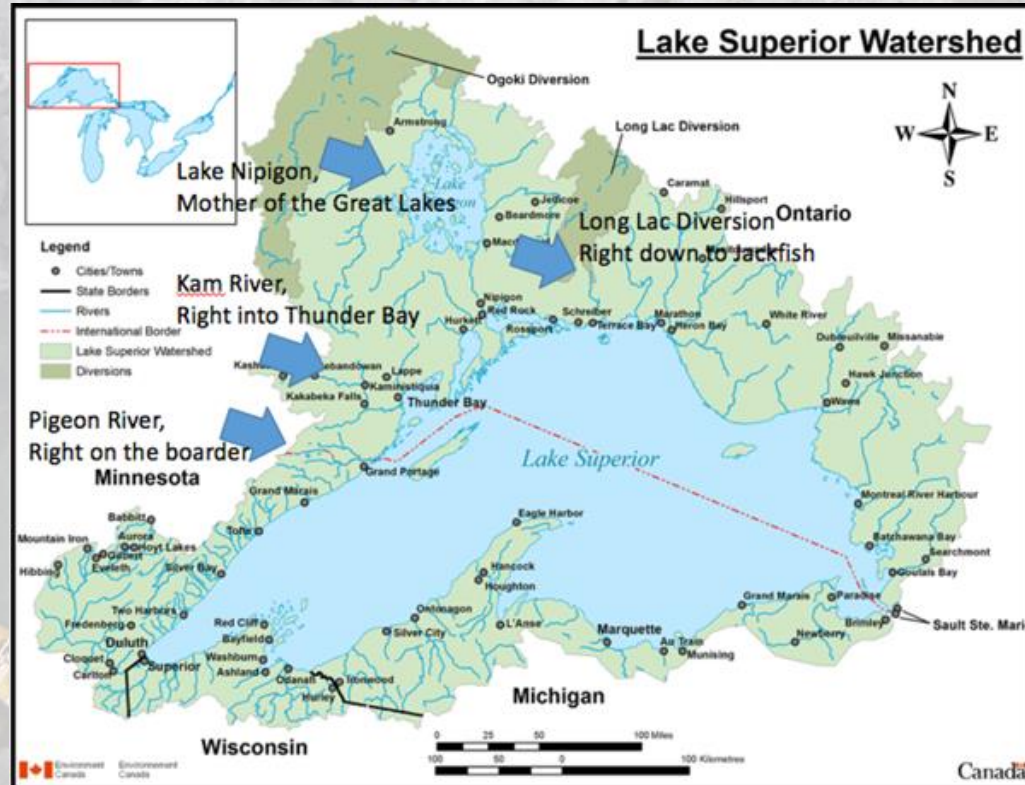
Lake Nipigon



Long Lac Diversion



Pigeon River



Reflections on learning-by-doing

To advance scholarly understanding and practical knowledge about collaboration across multiple boundaries to address today's interconnected equity, sustainability, and health (ESH) challenges

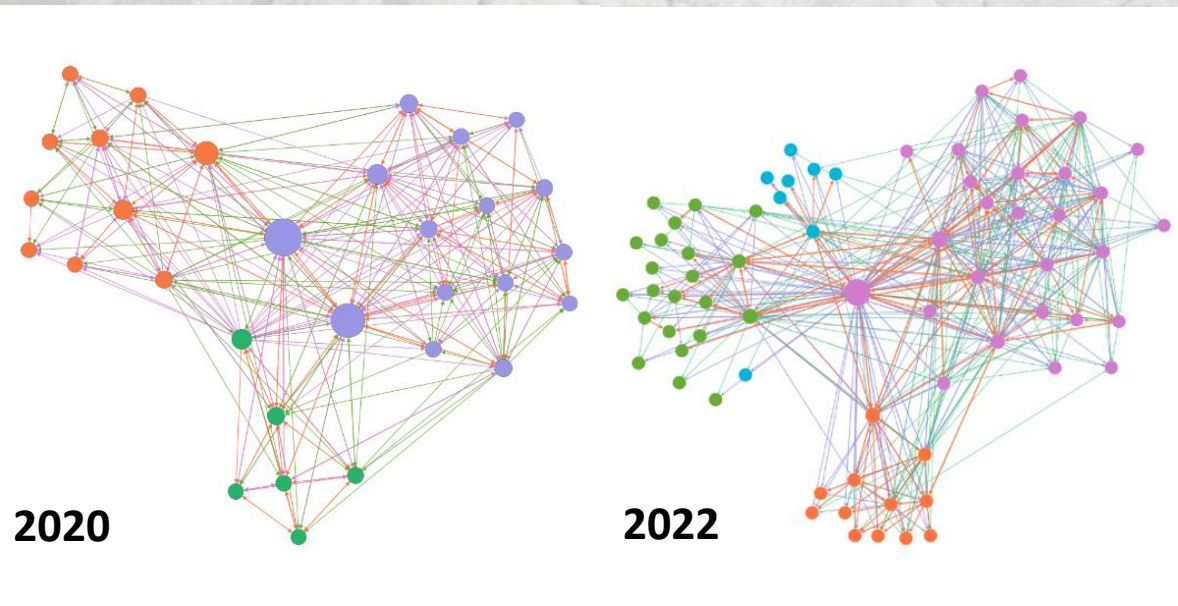


Developing a grounded theory of collaboration for equity, sustainability and health

Interviews with members to explore the influence of living labs and watershed nested collaboration

Series of visioning workshops

Annual survey and social network analysis



LSLLN communication over time





Reflections on learning-by-doing

Where are we headed next



Webinar Recordings & Live Discussion Summaries



 Community-Based Research Canada
Recherche partenariale du Canada

[Become a Member](#)

[Home](#) | [Who We Are](#) | [Network](#) | [News and Events](#) | [Get Involved](#) | [Resources](#)

[Approach](#)
[Webinars & Discussions](#)
[Publications](#)
[Case Studies](#)

Webinars & Discussions

CBR Canada hosts webinars and live online discussions to bridge capacities and promote research excellence. Below are webinar recordings and event summaries, organized from the most recent to earlier. Upcoming webinars and discussions are posted on the [Events page](#).

[2022](#) | [2021](#) | [2020](#) | [2019](#) | [2018](#) | [Earlier](#)

Next E-Learning Event



An e-learning event hosted by  Community-Based Research Canada
Recherche partenariale du Canada

Inclusive & Innovative Models for Refugee Health Equity

Presented by Astrid Velasquez & Madeleine Kruth



**NEW CANADIANS
HEALTH CENTRE**
CENTRE DE SANTÉ POUR LES
NOUVEAUX ARRIVANTS AU CANADA



NOVEMBER 16, 2023 12PM-1PM ET

Stay in Touch!



Community-Based Research Canada
Recherche partenariale du Canada

[Become a Member](#)

[Home](#) | [Who We Are](#) | [Network](#) | [News and Events](#) | [Get Involved](#) | [Resources](#)

e-Newsletters

The CBR Canada e-Newsletter is released every Fall, Winter and Spring, providing updates on the latest news, resources, and opportunities in Canadian-led community-based research.

Subscribe to the e-News

Don't miss community-based research news and events.

* Indicates required

Email Address *

Powered by [MailChimp](#)

Subscribe



Community-Based Research Canada
Recherche partenariale du Canada

Feedback





Thank You!

www.communitybasedresearch.ca



Community-Based Research Canada
Recherche partenariale du Canada