

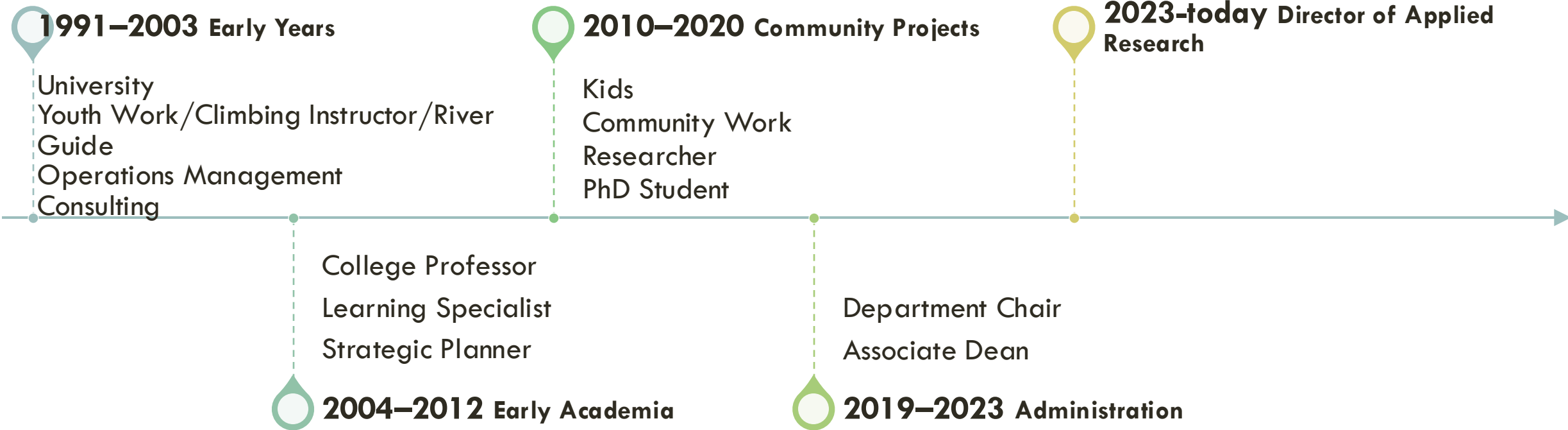
BUILDING COMMUNITY VIA RESEARCH: MAPPING THE FIELD OF HOMELESSNESS

- Organizations/ Entities
- Governing Tables/ Collectives
- Housing Continuum
- Outreach Teams
- Federal or Provincial Entity
- Systems



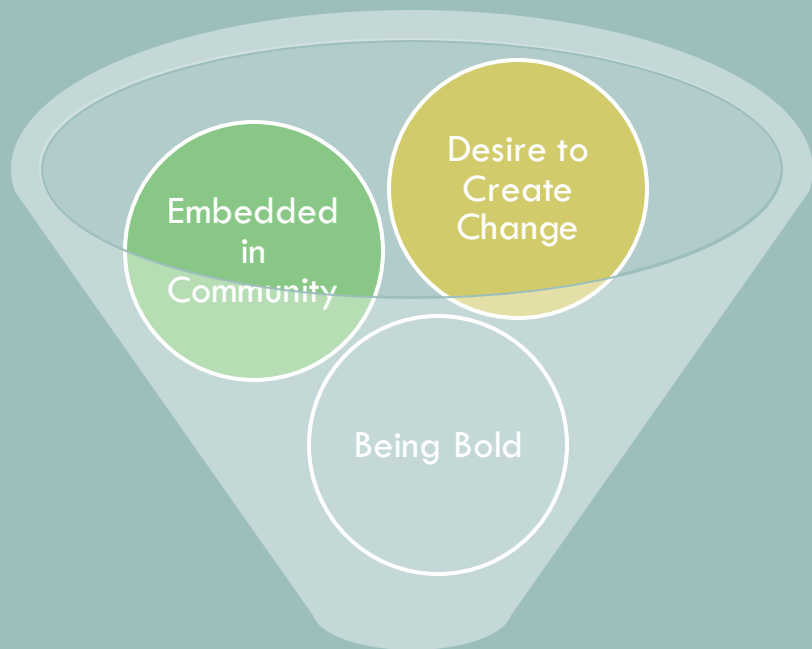


AGENDA

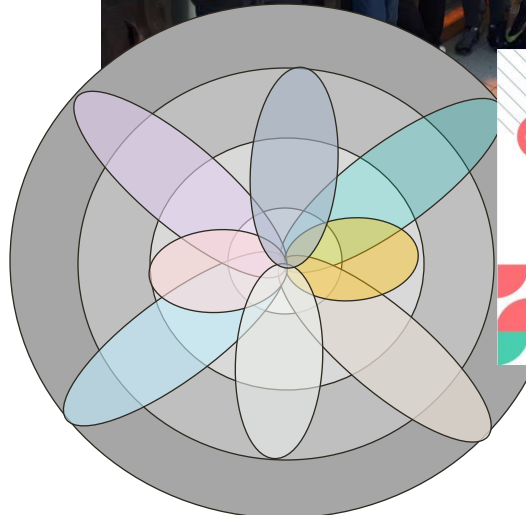
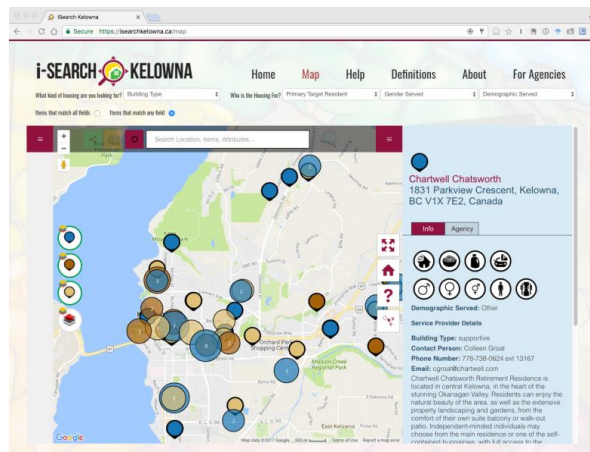


CBR — PASSION PATHWAY (1991 TO 2025)

DISTILLING IT DOWN



Opportunity for Research



Researcher Interest or Connections

```
graph TD; A[Researcher Interest or Connections] --> B[Community Partner Interest]; B --> C[Funder Driven]; C --> D[Other];
```

Community Partner Interest

Funder Driven

Other

HOW DID PROJECTS COME ABOUT



SIZE OF
COMMUNITY



TYPES OF SERVICES



TYPES OF
ORGANIZATIONS



RECEPTIVITY TO
COLLECTIVE
ACTION



PAST HISTORY WITH
RESEARCH
PROJECTS

DIFFERENT COMMUNITIES HAVE DIFFERENT
APPROACHES



KELOWNA



Prior to 2018 – various initiatives and research looking to address homelessness

2018 – Journey Home Task Force – results in Journey Home Strategy

2018 – Formation of Lived Experience of Homelessness Circle (LECoH)

2019 – Central Okanagan Journey Home Society (COJHS)

2019 – KHRC formed by UBC-Okanagan and Okanagan College

2023 – City of Kelowna stopped funding and COJHS wound down activities



KELOWNA

Journey HOME

Journey Home Strategy - 5 year plan to end homelessness

- First of it's kind to
 - embed research as a core pillar, sparked the creation of KHRC
 - Significantly involve Lived Experience in all aspects of the task force
- Development was very community focused and involved over 2000 points of engagement.



WHAT DID THIS ALLOW?

Journey HOME

Created opportunities for researchers to support community development directly. Researchers were included and involved in many facets of COJHS activities:

- Held Community sessions to determine research priorities
- Encouraged social sector to participate actively in research projects
- Brought together academic and private sector researchers
- Engaged Lived Experience individuals directly in research activities
- Supported knowledge mobilization in a more systematic way

PROJECTS



Mapping for Change



Teaching Case Studies – (COJHS, LECOH) Both won International awards at Case Competitions



Homelessness Vulnerabilities and Potential Mitigating Supports



Allyship in Research Toolkit (Homeless Hub – 2021)



Mapping a Field of Homelessness (PhD work)

MAPPING FOR CHANGE

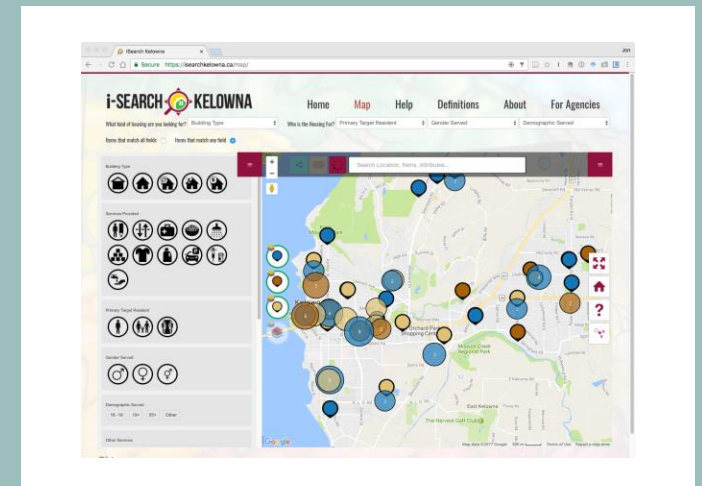
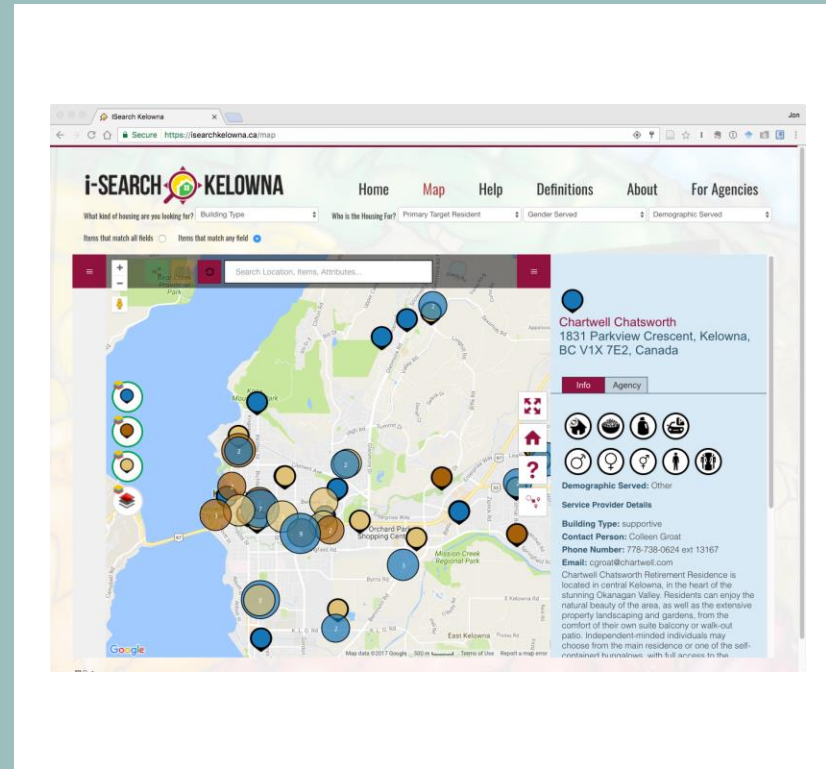
Creation of an interactive, crowd sourced/managed map.

Features:

- ❑ Filters to narrow search
- ❑ Information on agencies, housing and programming

Unique:

- ❑ Service Provider view which gave detailed info on each location.
- ❑ Ability to track bed availability and show open beds/wait lists



TEACHING CASE STUDIES



Came out of other
Research Projects



Unique way to support
knowledge mobilization



Alternative to traditional
academic publications

Myrah, K. & Rempel, K. (2022). Change in the Time of COVID: Determining How a Lived Experience Circle on Homelessness Adapts Their Team Development Model. In *SAGE Business Cases*. SAGE Publications, Ltd. <https://dx.doi.org/10.4135/9781529794960>

Myrah, K., Rempel, K., & Warner, D. (2021). Addressing Homelessness in Kelowna – Determining How a New Agency will Govern. *Case Research Journal*, 41(3), 87-106.

HOMELESSNESS VULNERABILITIES AND POTENTIAL MITIGATING SUPPORTS

Focus groups with service providers and individuals with Lived-Experience of homelessness.

Investigated core root causes for homelessness as defined for Kelowna.

Investigated mitigating factors.



ALLYSHIP IN RESEARCH TOOLKIT

“The purpose of this toolkit is to provide researchers and practitioners with a framework to embed lived and living experience, and allyship, into their work. The toolkit describes ways to incorporate authentic participation into the entire research or program development process, identifies strategies for engaging in a co-research/co-construction process, and outlines the benefits of practicing in this way.”



Allyship in Research Toolkit

A resource for those conducting
research with participants of
lived experience



Kelowna Homelessness
Research Collaborative

<https://khrc.ok.ubc.ca>

ALLYSHIP TOOLKIT

Displayed as a circle (not linear)

Core Principles:

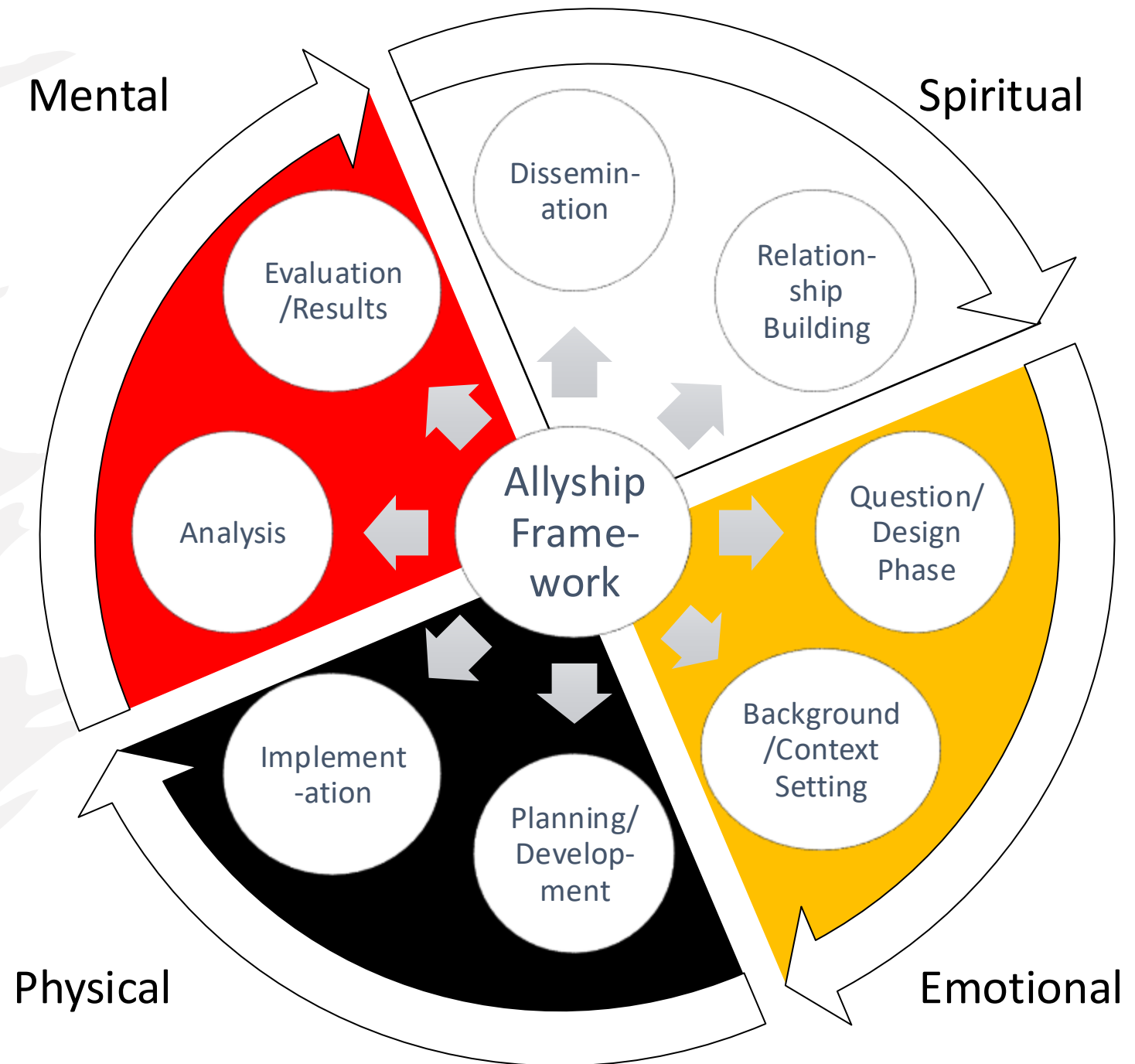
- Intentionality/Commitment
- Authenticity
- Respect/Inclusivity
- Sharing Space/Power
- Transparency



Blending Models:

Medicine Wheel + Allyship

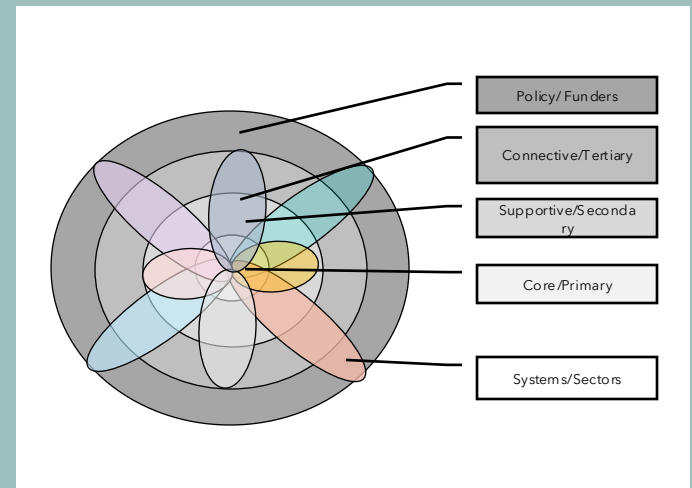
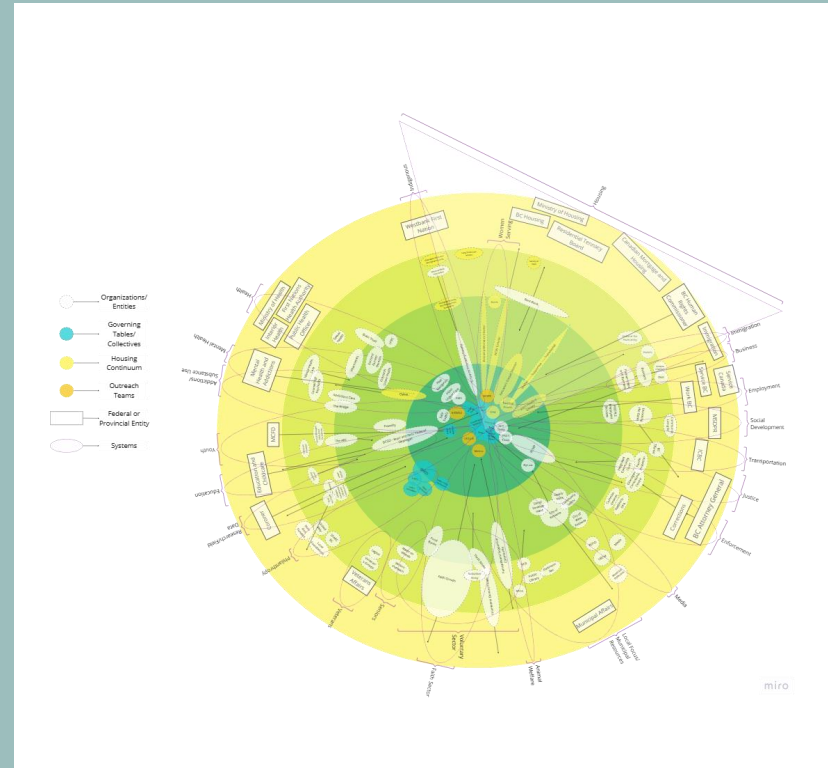
Application to your everyday practice



MAPPING THE FIELD OF HOMELESSNESS

My research is looking to understand how to model a social issue field. Social issue fields are clusters of systems that are inter-related and connected to social issues such as homelessness, poverty, climate change.

- ❑ This work looks to create a model to define these fields
- ❑ Results in a social issue map



The City of Penticton has taken a very different approach to addressing homelessness. Social Development department at the City has taken an active and engaged role within community.

2018 - Formalization of 100 More Homes Penticton

2022 - Entered into a new MOU with City of Penticton

- Work significantly expanded in scope
- Significant multi-sector, multi-agency collaboration

PENTICTON



United Way
British Columbia

PROJECTS



Penticton Lived-Experience Circle
on Homelessness



Pilot of new Granting Process

PENTICTON



United Way
British Columbia

FINAL OUTPUTS

Technical Report



Community Report



Toolkit



PLECOH

Research focused on whether a lived-experience circle was needed in Penticton and if so, what were the key factors required for success.

- ❑ Created 3 reports (Homeless Hub)
- ❑ Developed an “engagement matrix”

THE ENGAGEMENT MATRIX

Resources	Consultation	Involvement	Engagement
Time			
Relationships			
Types of Input			
Need for Follow-up			

LEVELS OF ENGAGEMENT



CONSULTATION



INVOLVEMENT



ENGAGEMENT

TOOLS TO SUPPORT LIVED-EXPERIENCE CIRCLES

NEW GRANTING APPROACHES

City of Penticton had funds to award locally.

- Wanted an alternative to traditional granting approaches

Design:

- Created a democratic process which involved identifying key project focus areas for the community (all applicants participated)
- Created an interactive full day session by which organizations worked together to design potential projects to address key focus areas. Project ideas were prioritized and agencies identified which projects they were interested in.
- Resulted in inter-agency collaboration, reduced application time

Project Area/ Level of Interest	Project Area	Project Area	Project Area	Project Area	Project Area
Lead					
Support Role					
Connected					

COLLABORATION MATRIX

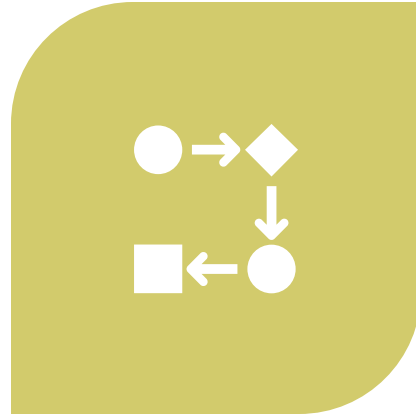
SUSTAINING CBR

Not easy to do:

- Researcher agendas can change
- Organizations change leadership and priorities irrespective of research agendas
- Does not always generate institutional support at researchers home post-secondary
- The work is hard, unpredictable, and implementation is never guaranteed



IT'S IMPACTFUL



EVERY PROJECT MOVES A
COMMUNITY FORWARD (EVEN
WHEN IT SEEMS IT ISN'T)



WE NEVER KNOW ALL OF THE
IMPACTS OUR WORK DOES

SO WHY CONTINUE DOING IT?



BECOMING MORE AND MORE
RECOGNIZED



IS HAPPENING IN COMMUNITY,
WITHIN ORGANIZATIONS



IS THE APPLIED ARM OF
RESEARCH

CAREERS IN CBR/CE_nR

QUESTIONS?

